



The
Wildlife
Trusts

Construction and infrastructure; one of the causes of the climate and nature crises, or part of the solution?'

Craig Bennett, Chief Executive, The Wildlife Trusts

@craigbennett3







The
Wildlife
Trusts

Part of the problem, or part of the solution?

1. National and regional strategic planning for sustainability







The
Wildlife
Trusts

Part of the problem, or part of the solution?

1. National and regional strategic planning for sustainability
2. Project design: integrating new construction around existing nature

'A disgrace': more than 100 trees cut down in Plymouth despite local opposition

Scores of trees destroyed in hours on Tuesday despite petition signed by 16,000 people



📷 The scene on Wednesday morning after the trees were felled. Photograph: Courtesy of Straw - Save the Trees Armada Way



The
Wildlife
Trusts

Part of the problem, or part of the solution?

1. National and regional strategic planning for sustainability
2. Project design: integrating new construction around existing nature
3. Project design: making sustainability integral from the outset



Emergency vehicles will have access to Merwede's centre, but not cars. Image: marco.boekman



The
Wildlife
Trusts

Part of the problem, or part of the solution?

1. National and regional strategic planning for sustainability
2. Project design: integrating new construction around existing nature
3. Project design: making sustainability integral from the outset
4. Creating new on-site nature







Culture & Recreation

Parkland Landscape

Home Grown & Well-being Zone

Education Zone

Ecology & Habitat Zone

Castle Views

Church Views

COLLIN STREET

Broad Marsh Car Park, Coach Station & Central Library

Nottingham College City Hub

influence®



influence[®]



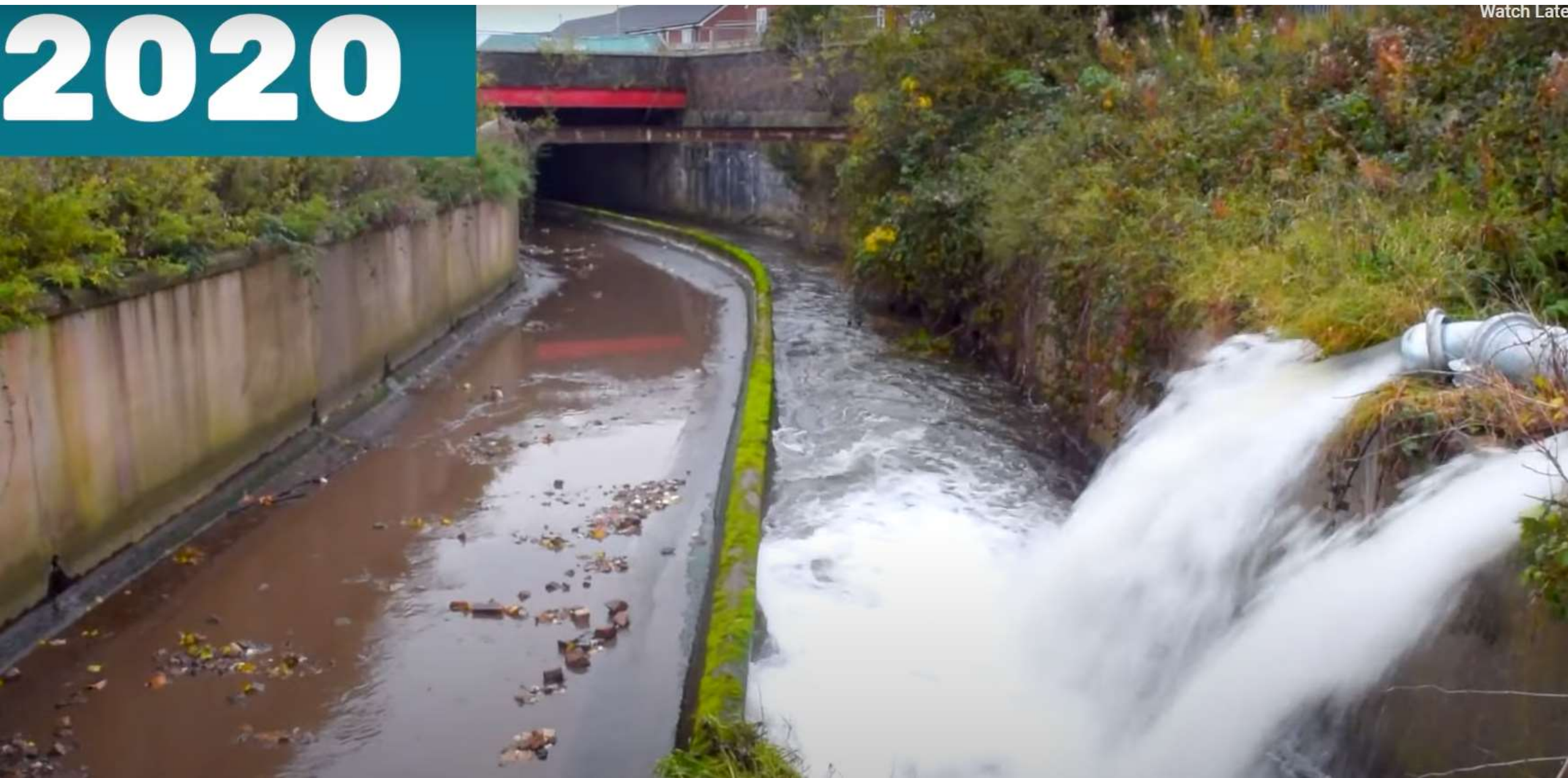
influence





2020

Watch Later







2021

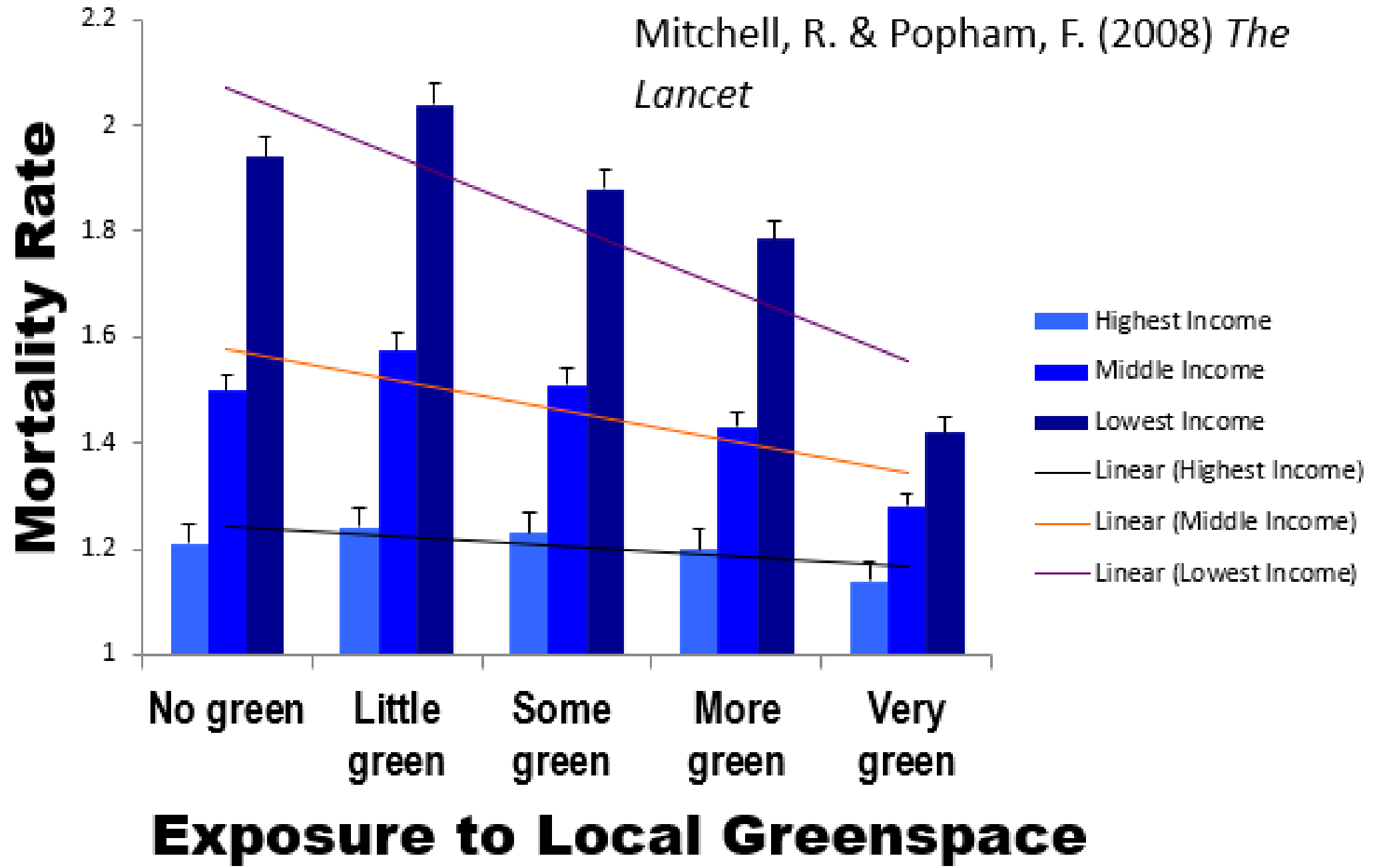




2023



Mitchell, R. & Popham, F. (2008) *The Lancet*





The
Wildlife
Trusts

Part of the problem, or part of the solution?

1. National and regional strategic planning for sustainability
2. Project design: integrating new construction around existing nature
3. Project design: making sustainability integral from the outset
4. Creating new on-site nature
5. Creating more space for nature off-site







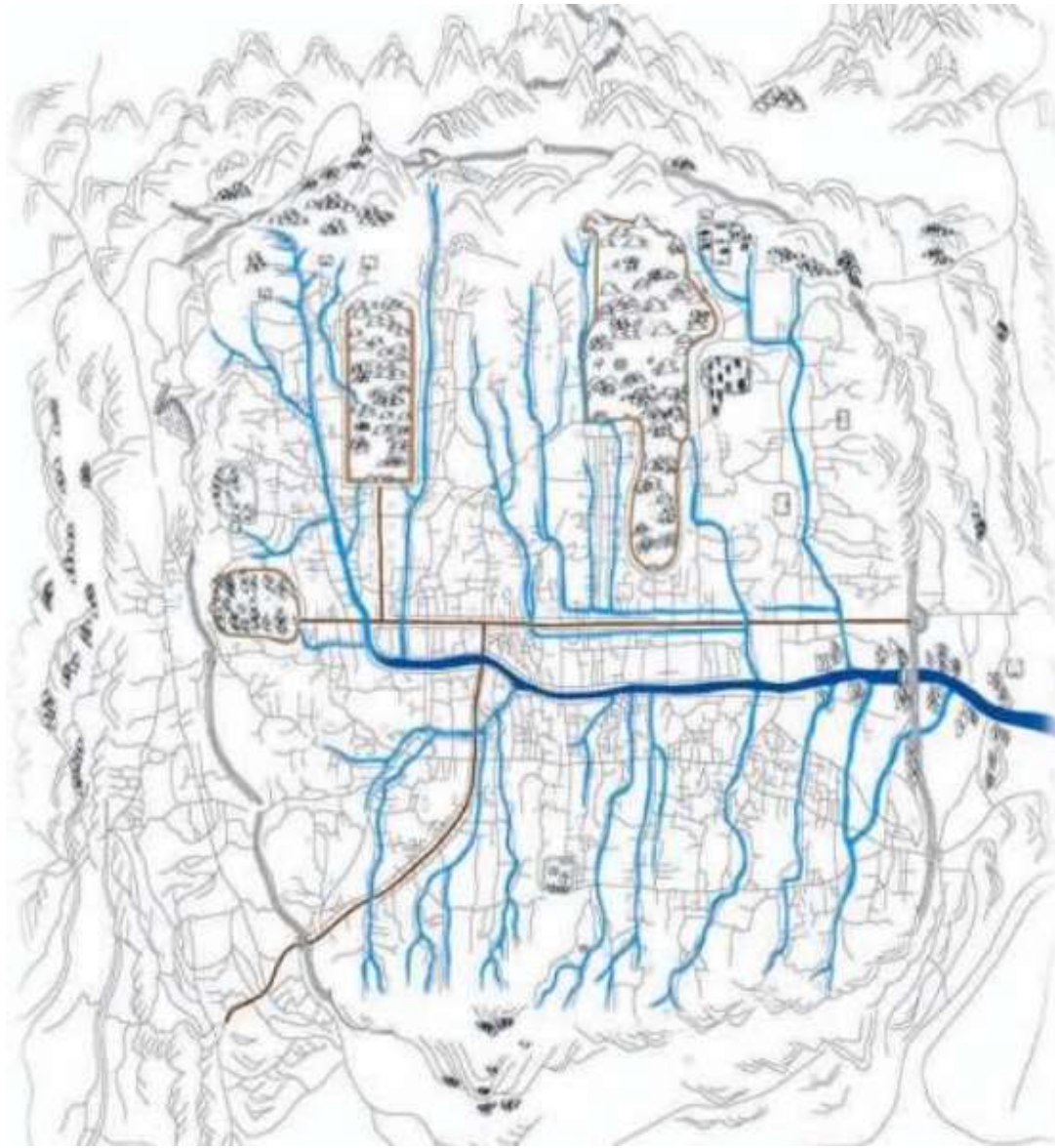
The
Wildlife
Trusts

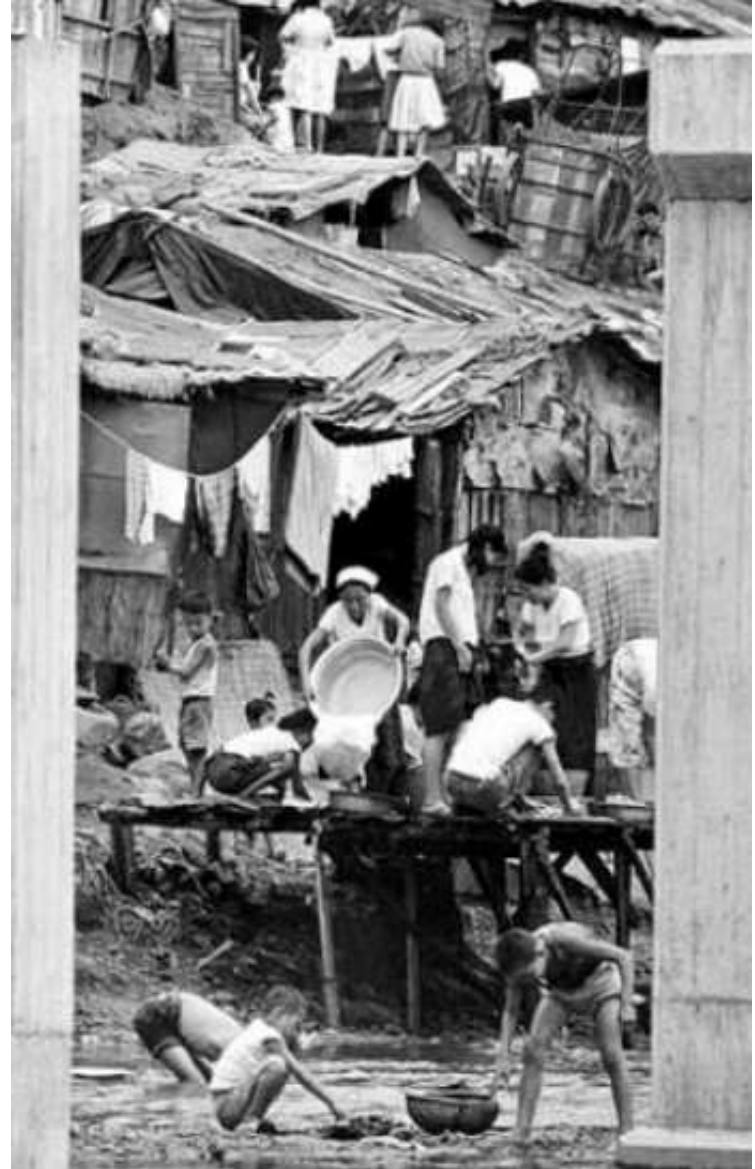
Part of the problem, or part of the solution?

1. National and regional strategic planning for sustainability
2. Project design: integrating new construction around existing nature
3. Project design: making sustainability integral from the outset
4. Creating new on-site nature
5. Creating more space for nature off-site
6. Materials
7. Energy and water efficiency
8. On site renewables
9. Creating new community and civic space

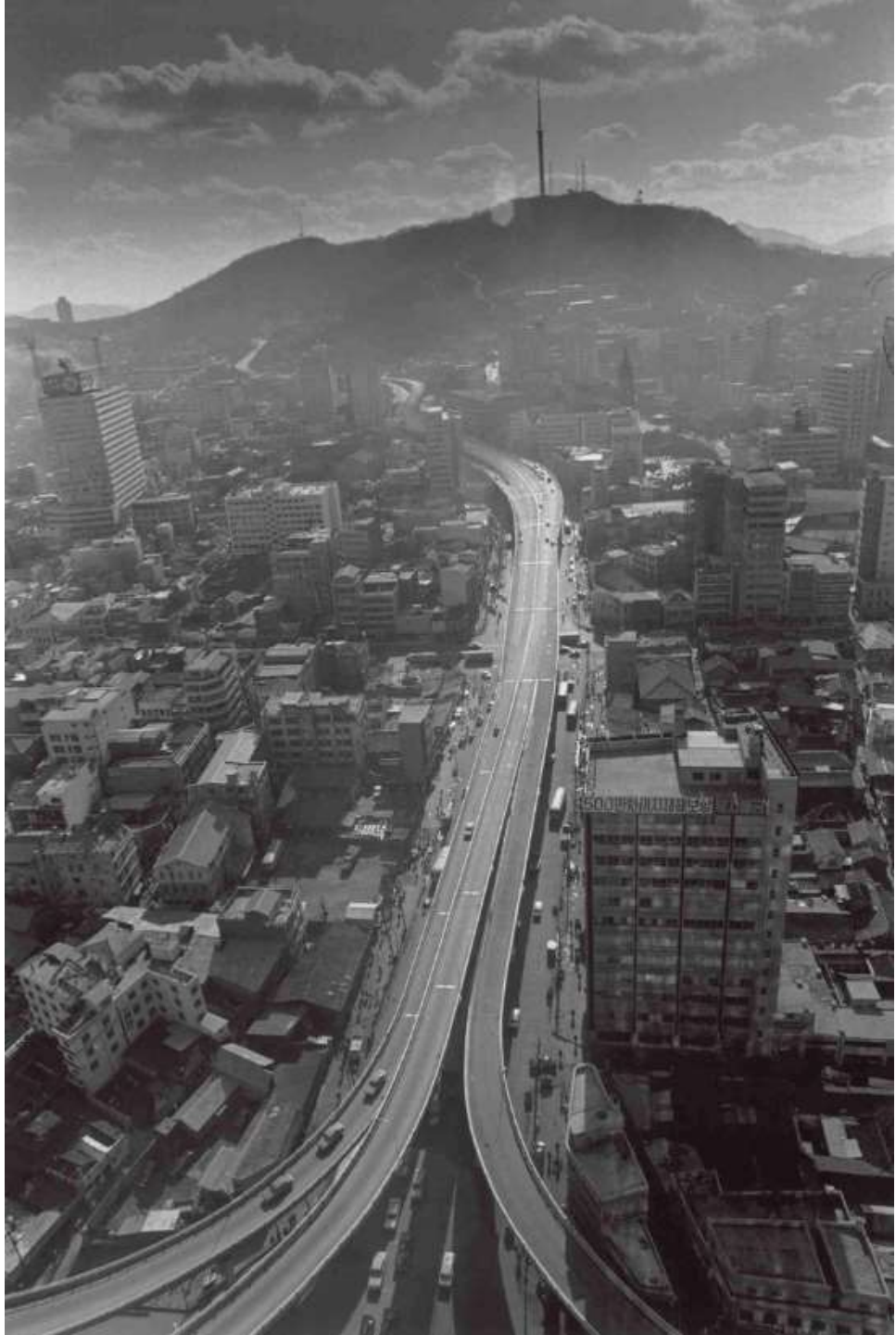
Restoration of 8km of Cheonggyecheon river, Seoul



























1. National and regional strategic planning for sustainability
2. Project design: integrating new construction around existing nature
3. Project design: making sustainability integral from the outset
4. Creating new on-site nature
5. Creating more space for nature off-site
6. Materials
7. Energy and water efficiency
8. On site renewables
9. Creating new community and civic space
10. Using the civil engineering and construction industry voice well

House builders should stop complaining and 'be part of the solution' says Natural England chair

EXCLUSIVE

Tony Juniper told i that construction firms were not being unfairly targeted and that the private sector needed to play its part if the UK was to move from nature conservation to recovery



New homes add phosphate and nitrogen to rivers, polluting them (Photo: Christopher Furlong/Getty)



1. National and regional strategic planning for sustainability
2. Project design: integrating new construction around existing nature
3. Project design: making sustainability integral from the outset
4. Creating new on-site nature
5. Creating more space for nature off-site
6. Materials
7. Energy and water efficiency
8. On site renewables
9. Creating new community and civic space
10. Using the civil engineering and construction industry voice well



The
Wildlife
Trusts

Construction and infrastructure; one of the causes of the climate and nature crises, or part of the solution?'

Craig Bennett, Chief Executive, The Wildlife Trusts

@craigbennett3

